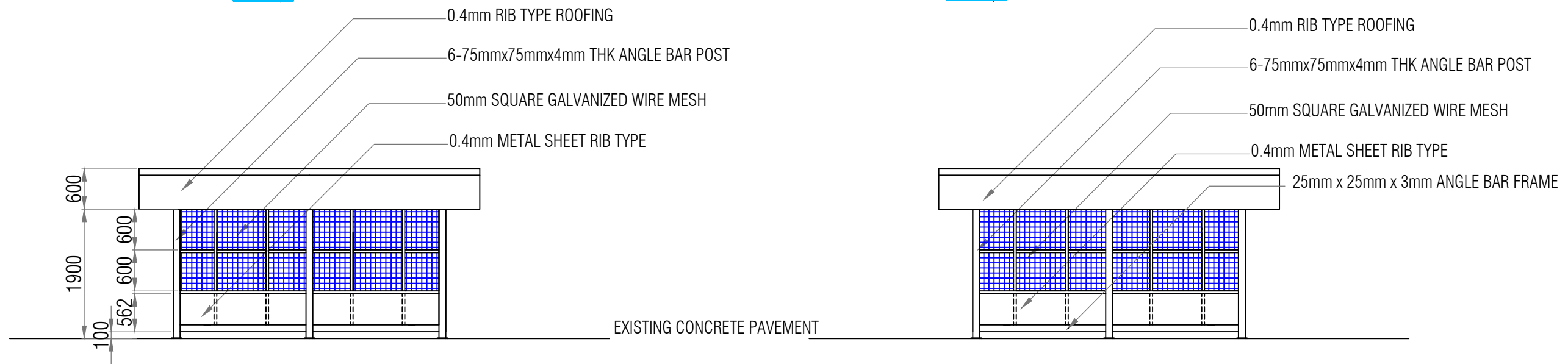


 Front elevation  
SCALE: 1:30



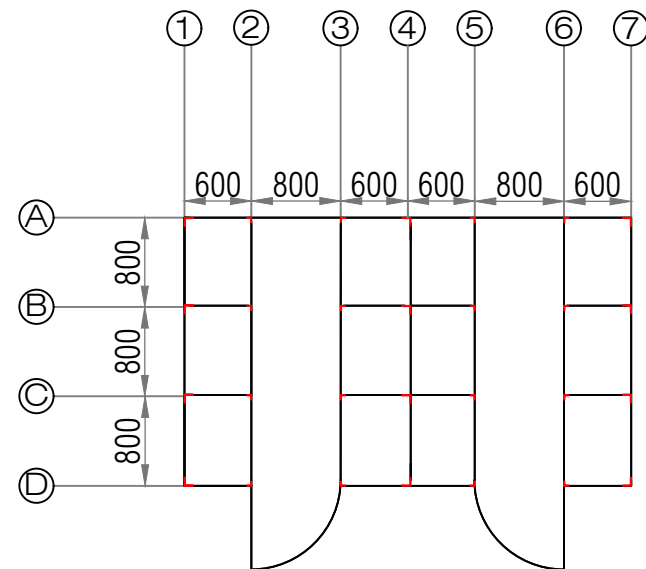
**Front elevation**  
SCALE: 1:75

**R/L SIDE elevation**  
SCALE: 1:75



**Rear elevation**  
SCALE: 1:75

**Section thru A-A**  
SCALE: 1:75

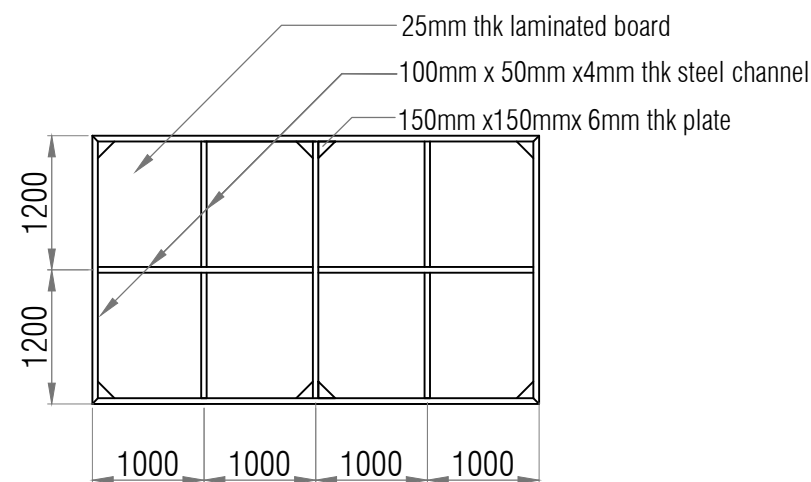


NOTES:  
ANGLE BAR SCHEDULE  
1.VERTICAL

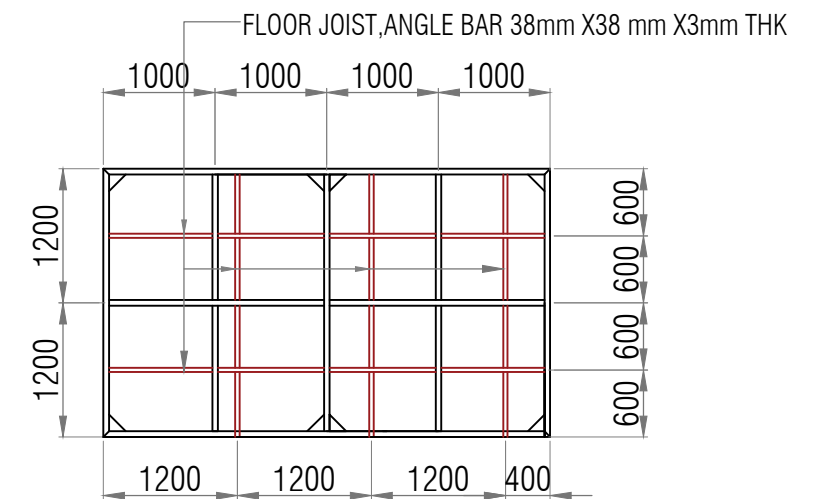
LOCATION	SIZE	
MAIN POST	75MMX75MMX6MM	A1, A4, A7, B1, B4,C4, B7, D1 , D4 & D7
PERIMETER	38MMX38MMX4MM	A2, A3, A5 ,A6, B1, C1, B7, C7 ,D2, D3, D5 , & D6
INTERIOR	25MMX25MMX4MM	B2-6 & C2-6

2.HORIZONTAL  
ALL HORIZONTAL MEMBERS ARE 25MMX25MM ANGLE BAR EXCEPT THE  
GIRT PLATE WHICH IS 50MM X50MM X 4MM THK ANGLE BAR

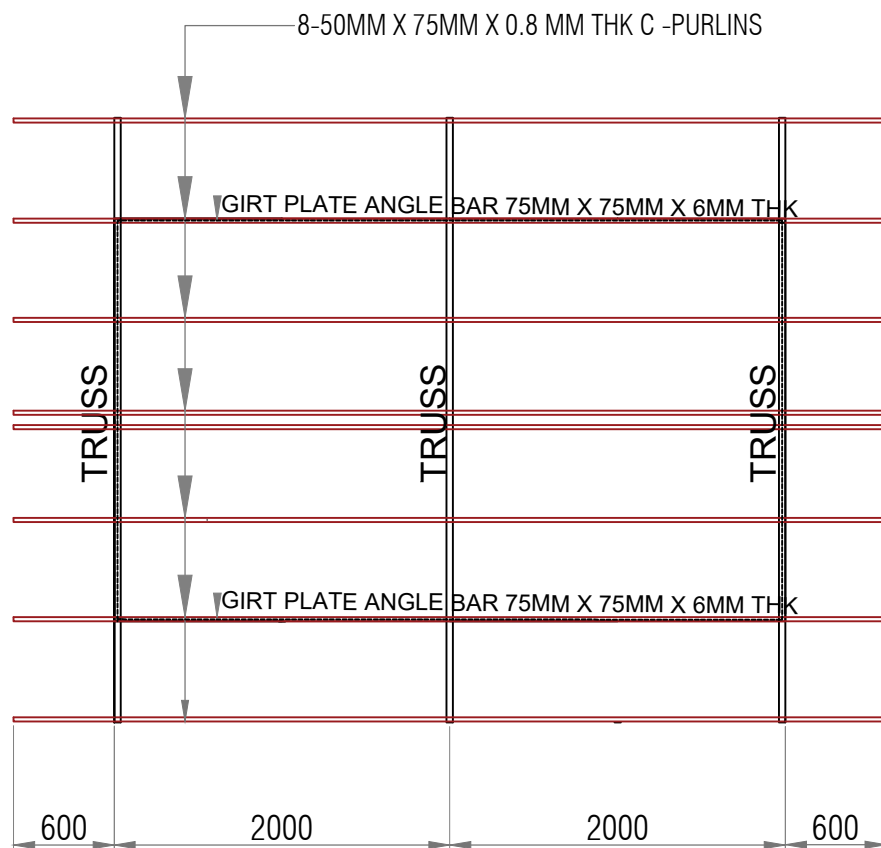
 floor plan  
SCALE: 1:75



 floor framing plan  
SCALE: 1:75



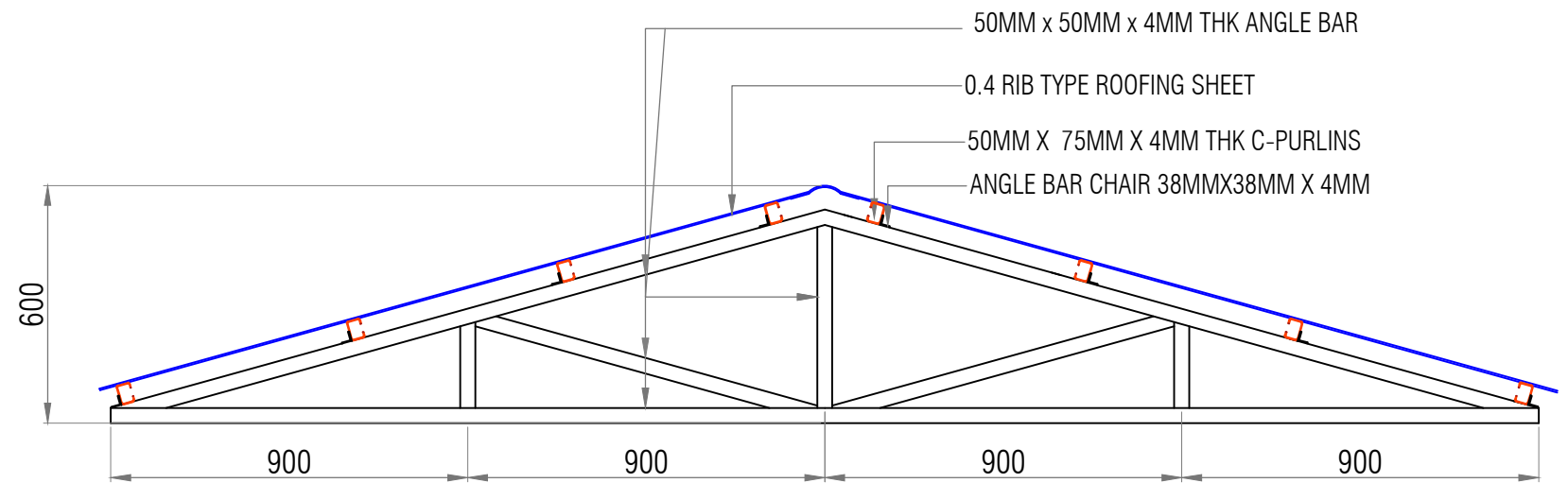
 floor joist framing plan  
SCALE: 1:75



roof framing plan

SCALE:

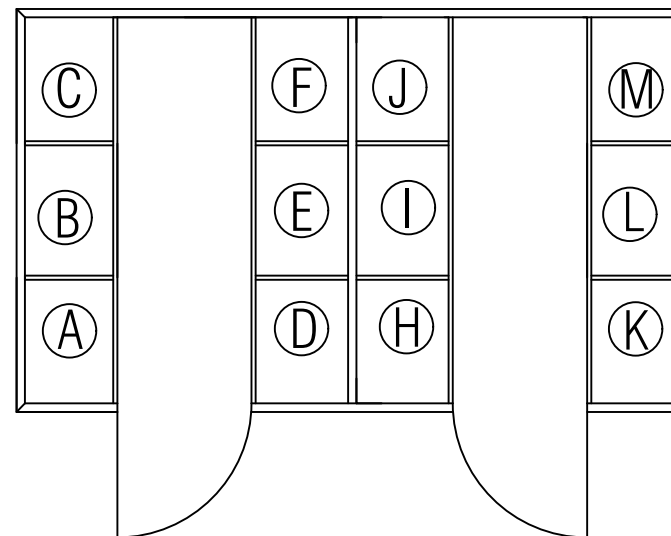
1:50



typical truss detail

SCALE:

1:20



location disposal

SCALE:

1:20

LEGEND:

HAZARDOUS:

- A. USED OIL
- B. BUSTED LEAD ACID BATTERIES
- C. USED LEAD ACID BATTERIES
- D, E & F. RESERVED

RECYCLABLE:

- H. USED PAPER/CARTOONS/CORRUGATED BOXES
- I. PLASTICS
- J. ALUMINUM CAN AND TUBES
- K. GLASS CONTAINER/GLASS
- L & M. RESERVED

TITLE:

**SUPPLY OF MATERIALS, LABOR AND EQUIPMENT FOR THE MATERIALS RECOVERY FACILITY**

LOCATION:

PORT OF BENONI

PREPARED BY:

NESTOR S. BULLECER  
Senior Engineer A

CHECKED BY:

MARC M. AVELLANA  
Supervising Engineer

RECOMMENDED BY:

ANTONIO M. TORCINO, JR.  
Acting ESD Manager

APPROVED:

FERNANDO B. MAPALO, JR.  
Acting Port Manager

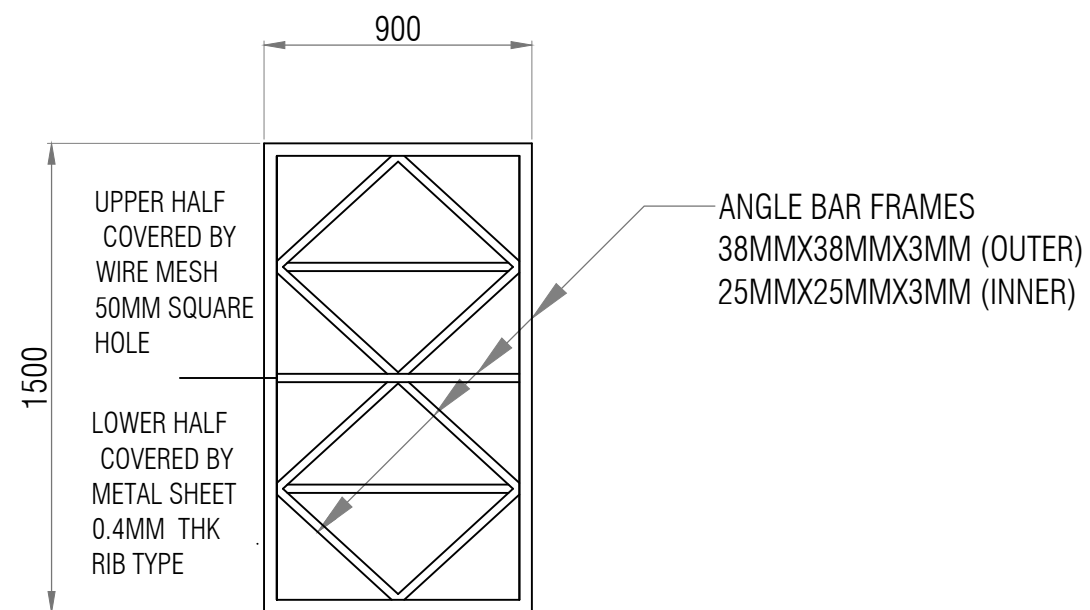
ARCHITECTURAL

SHEET CONTENTS

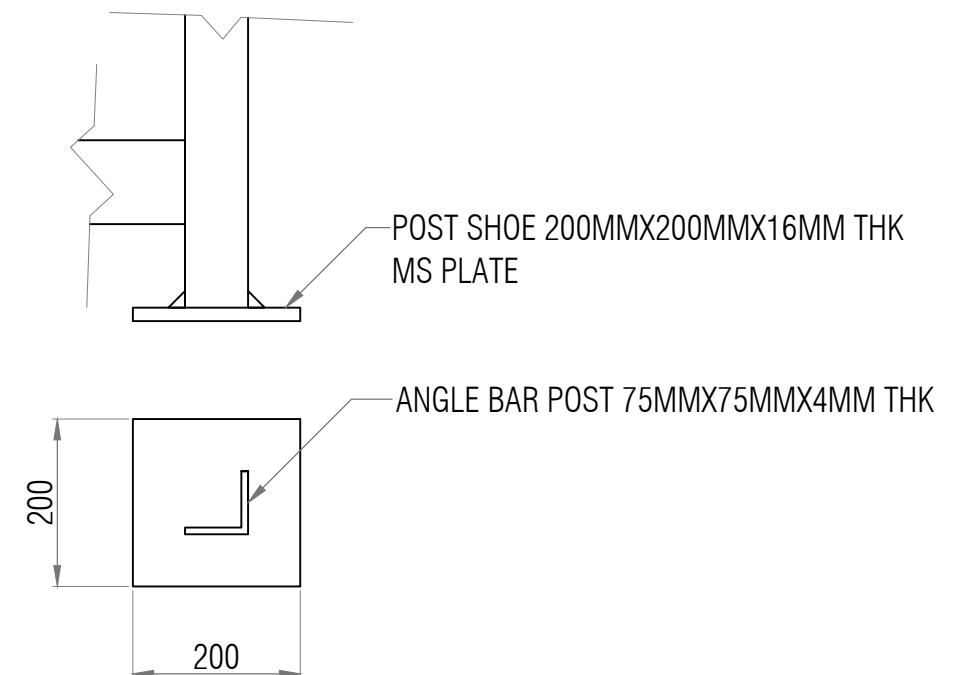
roof framing plan  
typical truss detail

SHEET NO.

4  
5



 door details  
1:25



 post shoe details  
SCALE: 1:25