


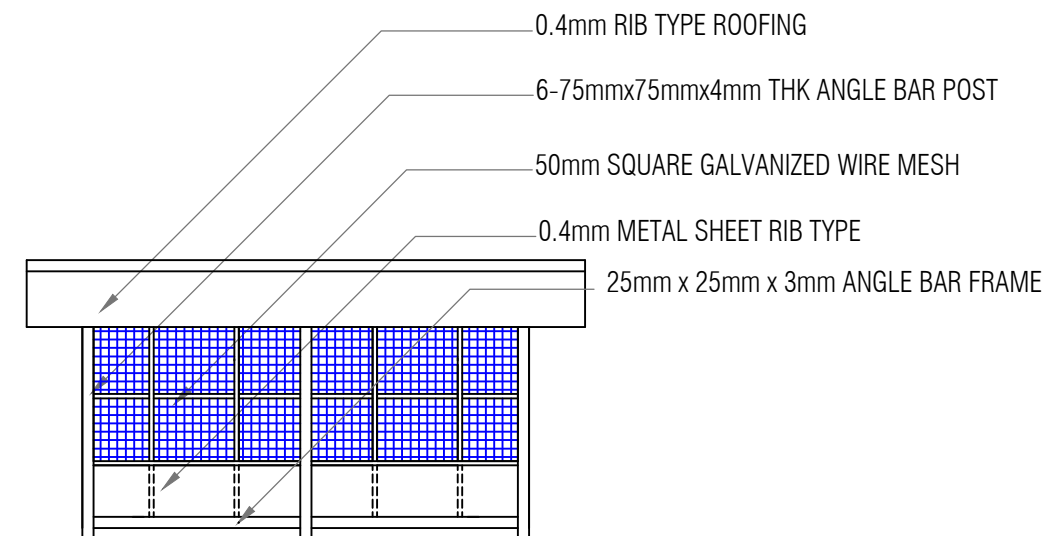
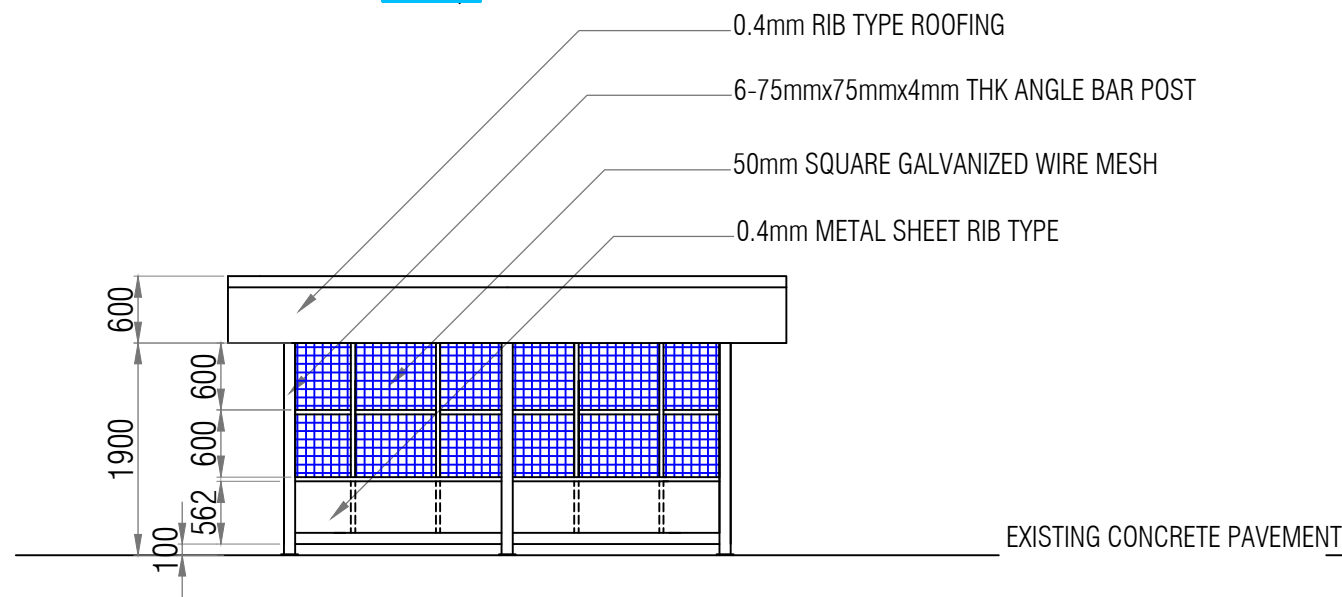
 Front elevation
SCALE: 1:30

 <p>PHILIPPINE PORTS AUTHORITY</p> <p>PORT OF MISAMIS ORIENTAL / CAGAYAN DE ORO</p>	TITLE:	SUPPLY OF MATERIALS, LABOR AND EQUIPMENT FOR THE MATERIALS RECOVERY FACILITY				ARCHITECTURAL	SHEET NO.
	LOCATION:	PORT OF OPOL				SHEET CONTENTS	<div>1 5</div>
	PREPARED BY:	CHECKED BY:	RECOMMENDED BY:	APPROVED:	Front Elevation		
	NESTOR S.BULLECER Senior Engineer A	MARC M. AVELLANA Supervising Engineer	ANTONIO M. TORCINO, JR. Acting ESD Manager	FERNANDO B. MAPALO, JR. Acting Port Manager			



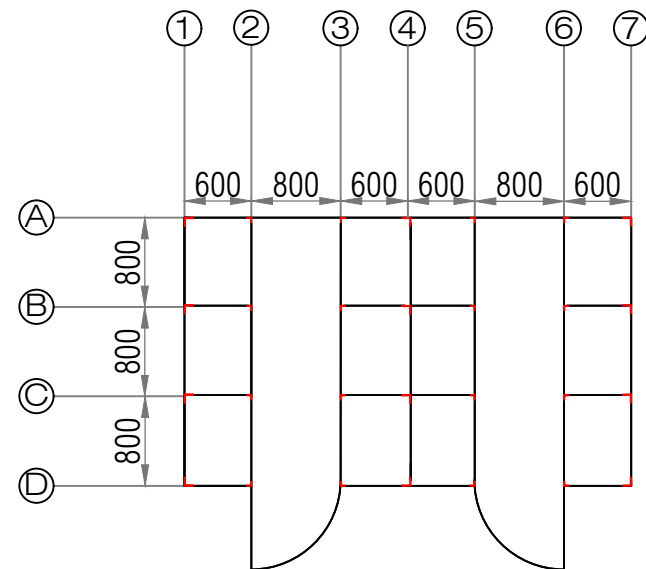
Front elevation
SCALE: 1:75

R/L SIDE elevation
SCALE: 1:75



Rear elevation
SCALE: 1:75

Section thru A-A
SCALE: 1:75

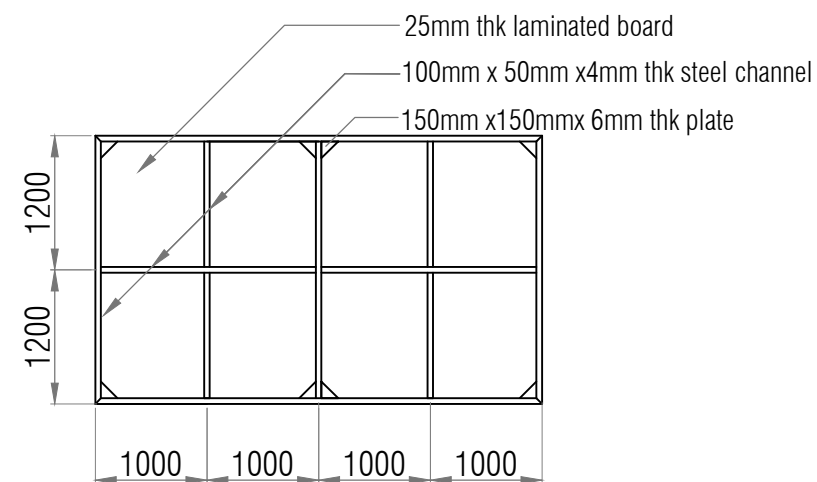


NOTES:
ANGLE BAR SCHEDULE
1.VERTICAL

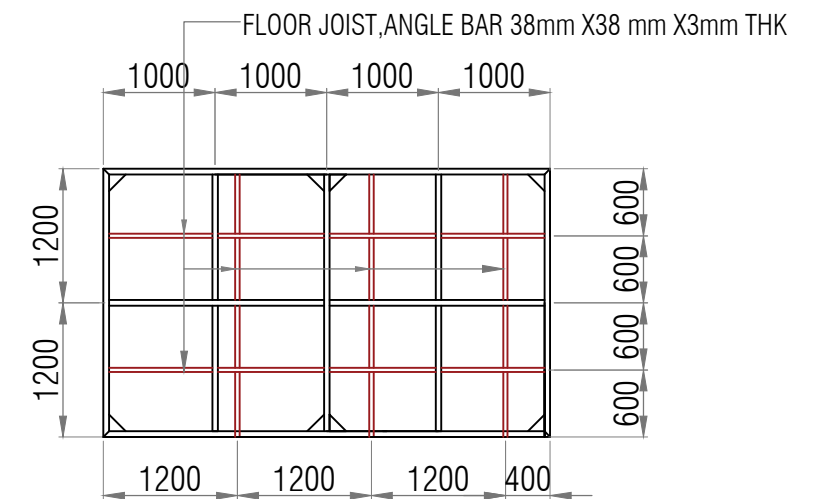
LOCATION	SIZE	
MAIN POST	75MMX75MMX6MM	A1, A4, A7, B1, B4,C4, B7, D1 , D4 & D7
PERIMETER	38MMX38MMX4MM	A2, A3, A5 ,A6, B1, C1, B7, C7 ,D2, D3, D5 , & D6
INTERIOR	25MMX25MMX4MM	B2-6 & C2-6

2.HORIZONTAL
ALL HORIZONTAL MEMBERS ARE 25MMX25MM ANGLE BAR EXCEPT THE
GIRT PLATE WHICH IS 50MM X50MM X 4MM THK ANGLE BAR

 floor plan
SCALE: 1:75



 floor framing plan
SCALE: 1:75



 floor joist framing plan
SCALE: 1:75

TITLE:

SUPPLY OF MATERIALS, LABOR AND EQUIPMENT FOR THE MATERIALS RECOVERY FACILITY

LOCATION:

PORT OF OPOL

PREPARED BY:

NESTOR S.BULLECER
Senior Engineer A

CHECKED BY:

MARC M. AVELLANA
Supervising Engineer

RECOMMENDED BY:

ANTONIO M. TORCINO, JR.
Acting ESD Manager

APPROVED:

FERNANDO B. MAPALO, JR.
Acting Port Manager

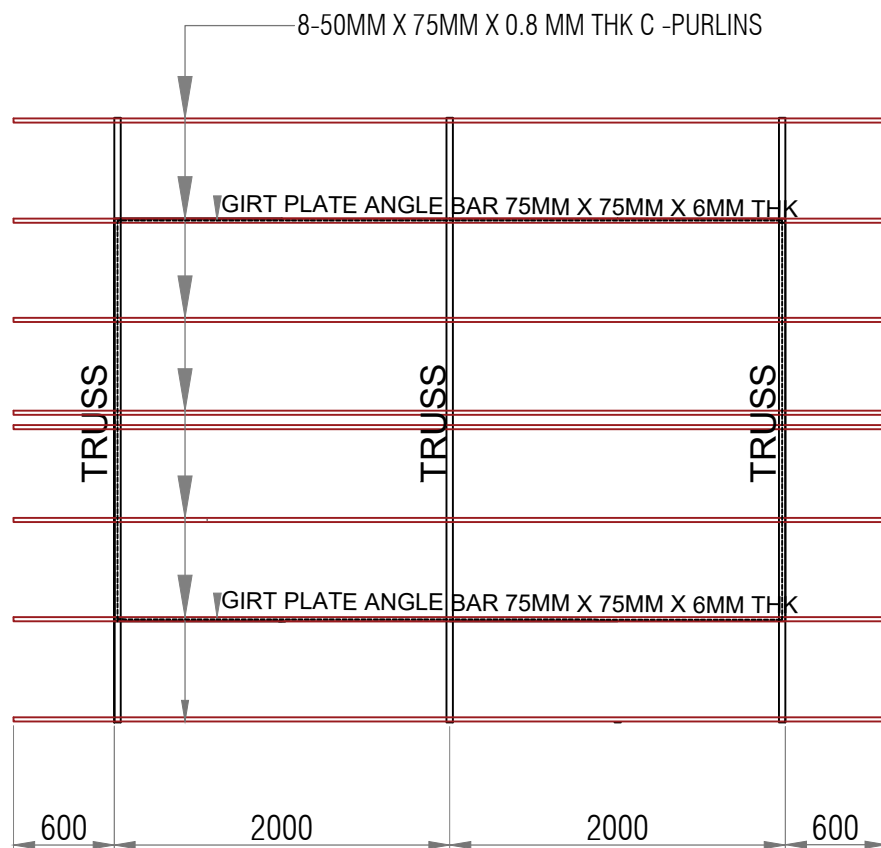
ARCHITECTURAL

SHEET CONTENTS

floor plan
floor framing plan
floor joist framing plan

SHEET NO.

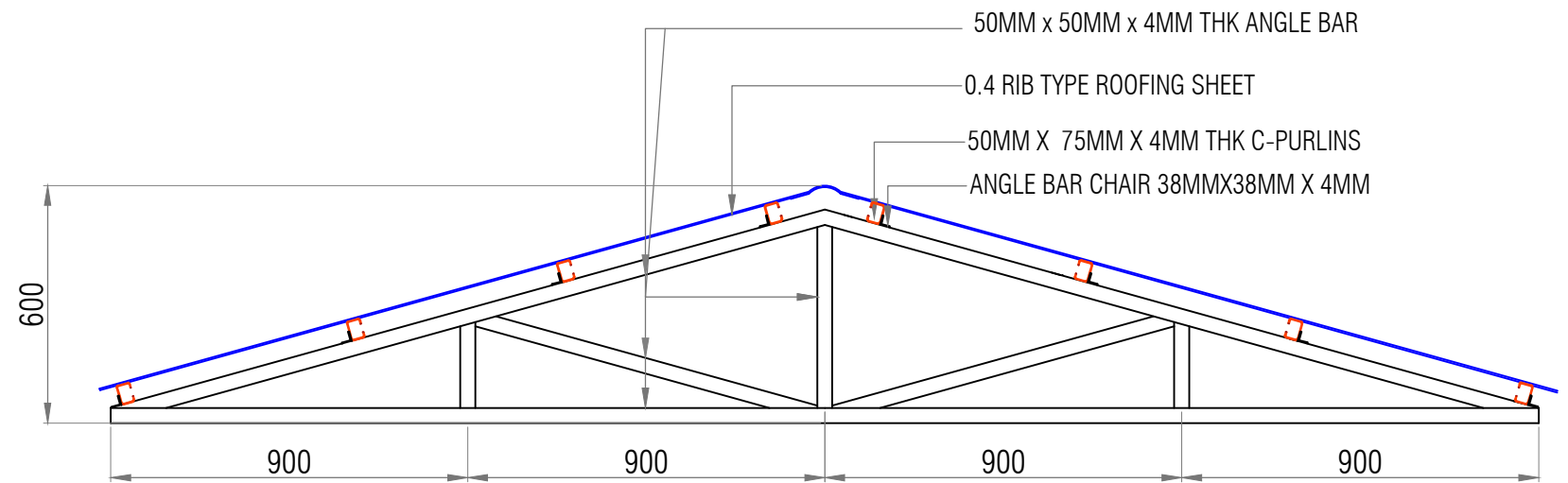
3
5



roof framing plan

SCALE:

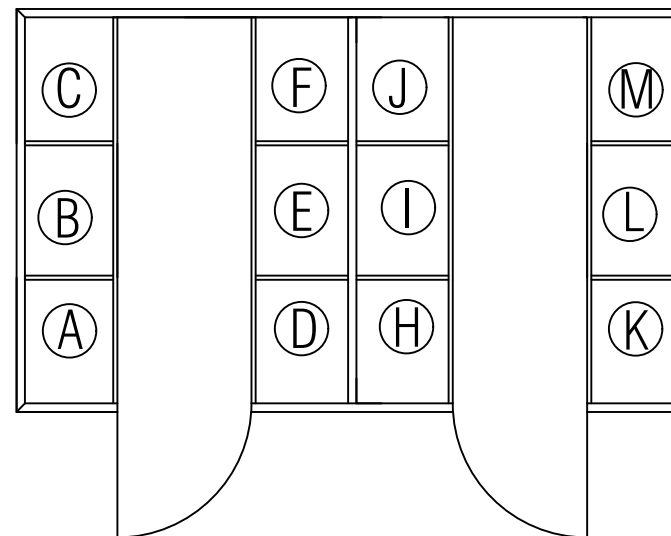
1:50



typical truss detail

SCALE:

1:20



location disposal

SCALE:

1:20

LEGEND:

HAZARDOUS:

- A. USED OIL
- B. BUSTED LEAD ACID BATTERIES
- C. USED LEAD ACID BATTERIES
- D, E & F. RESERVED

RECYCLABLE:

- H. USED PAPER/CARTOONS/CORRUGATED BOXES
- I. PLASTICS
- J. ALUMINUM CAN AND TUBES
- K. GLASS CONTAINER/GLASS
- L & M. RESERVED

TITLE:

SUPPLY OF MATERIALS, LABOR AND EQUIPMENT FOR THE MATERIALS RECOVERY FACILITY

LOCATION:

PORT OF OPOL

PREPARED BY:

NESTOR S. BULLECER
Senior Engineer A

CHECKED BY:

MARC M. AVELLANA
Supervising Engineer

RECOMMENDED BY:

ANTONIO M. TORCINO, JR.
Acting ESD Manager

APPROVED:

FERNANDO B. MAPALO, JR.
Acting Port Manager

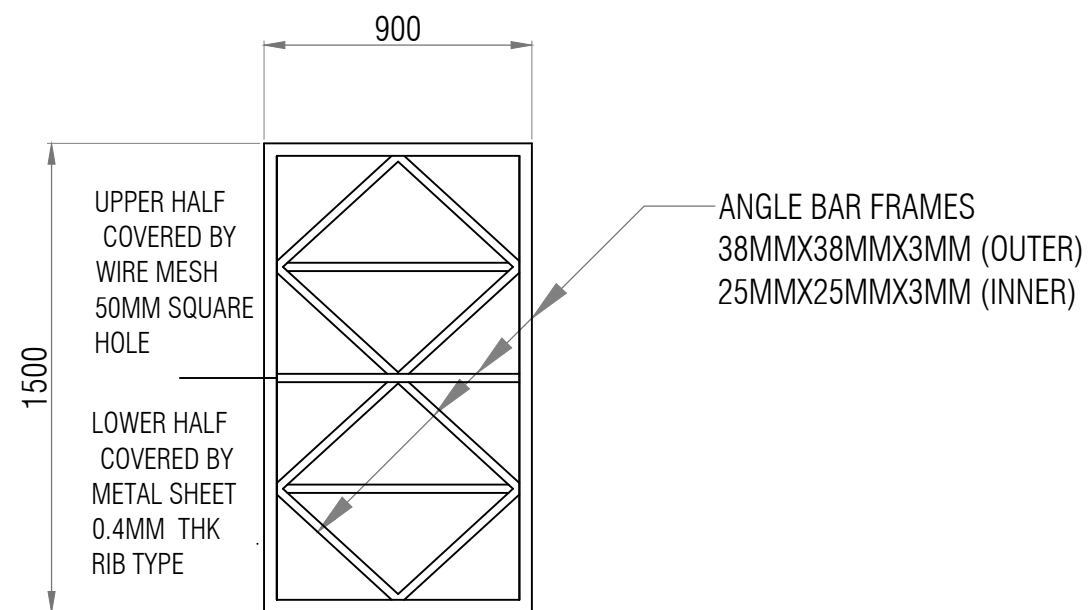
ARCHITECTURAL

SHEET CONTENTS

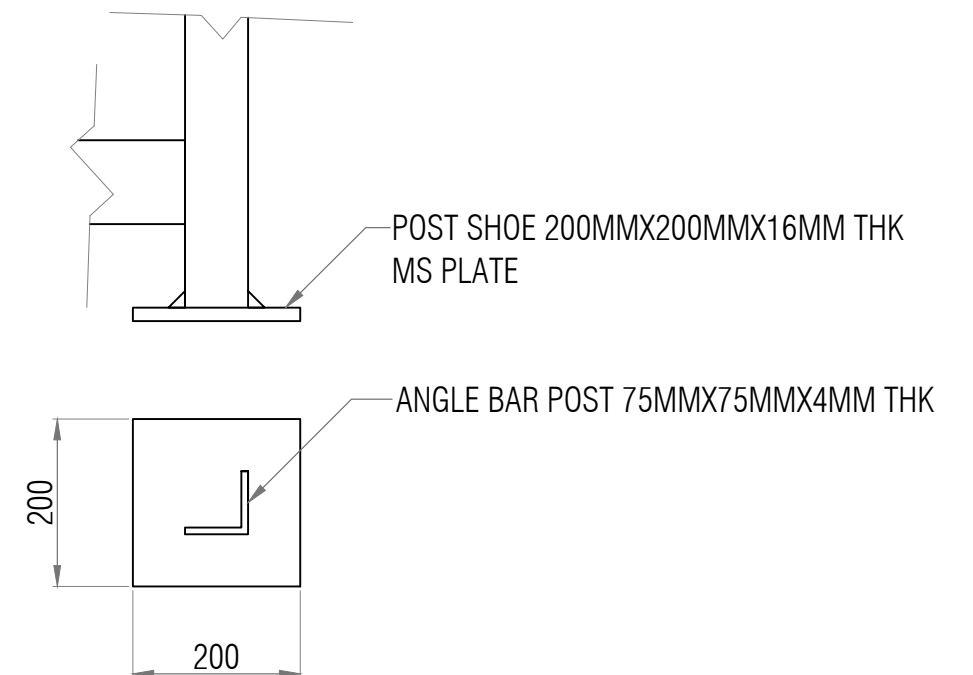
roof framing plan
typical truss detail

SHEET NO.

4
5



 door details
1:25



 post shoe details
SCALE: 1:25