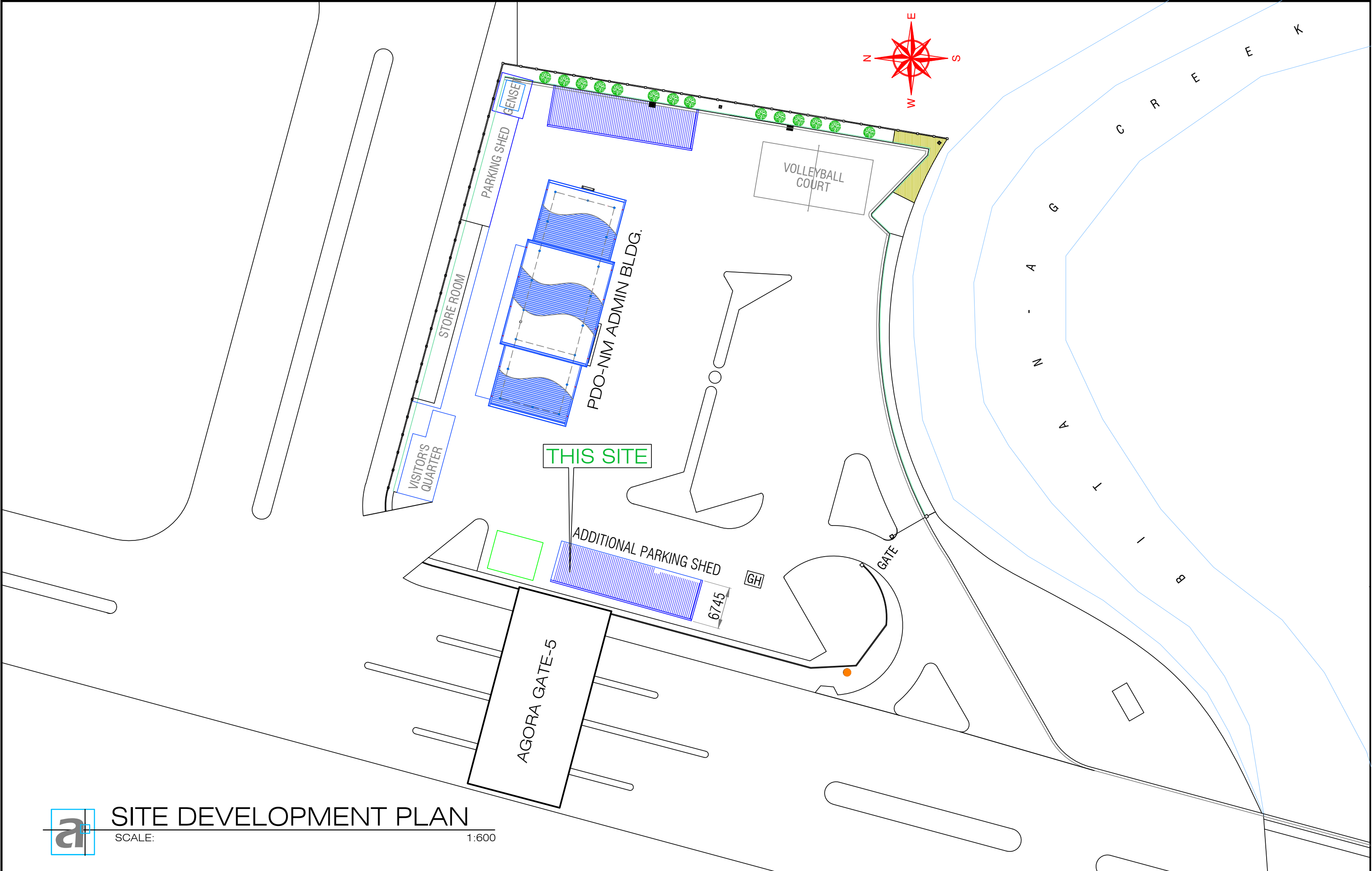

 <div>PORT OF CAGAYAN DE ORO MISAMIS ORIENTAL</div>	TITLE:		PROPOSED PARKING SHED AT BUILDING 2					<div>SHEET NO.</div> <div>110</div>
	LOCATION:		PORT OF CAGAYAN DE ORO				SHEET CONTENTS	
	PREPARED BY:		CHECKED BY:	SUBMITTED BY:	APPROVED:		● LOCATION PLAN	
	KAREL T. SUMICAD Construction Foreman A		MARC M. AVELLANA Supervising Engineer A	ANTONIO M. TORCINO, JR. Acting ESD Manager	ISIDRO V. BUTASLAC, JR. Port Manager			

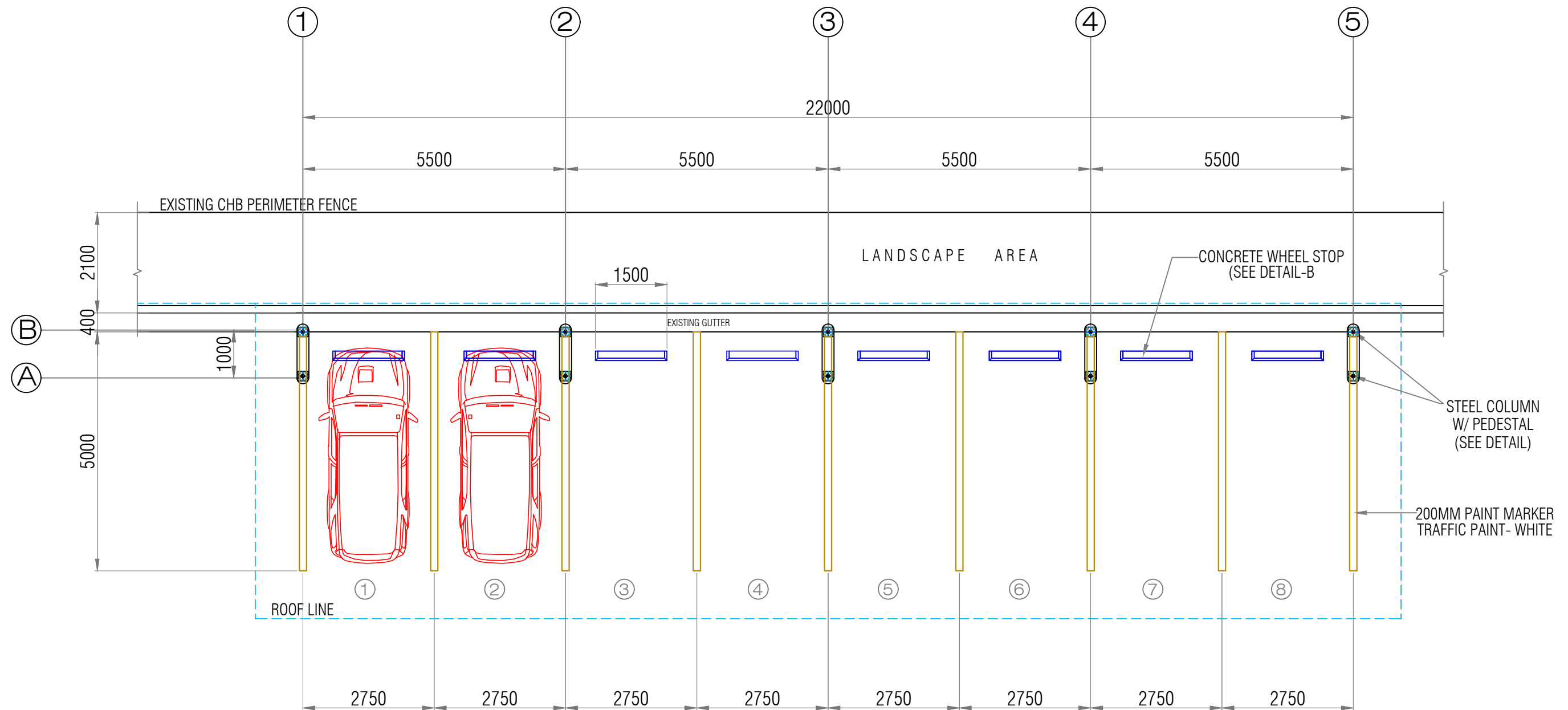


SITE DEVELOPMENT PLAN


SCALE:

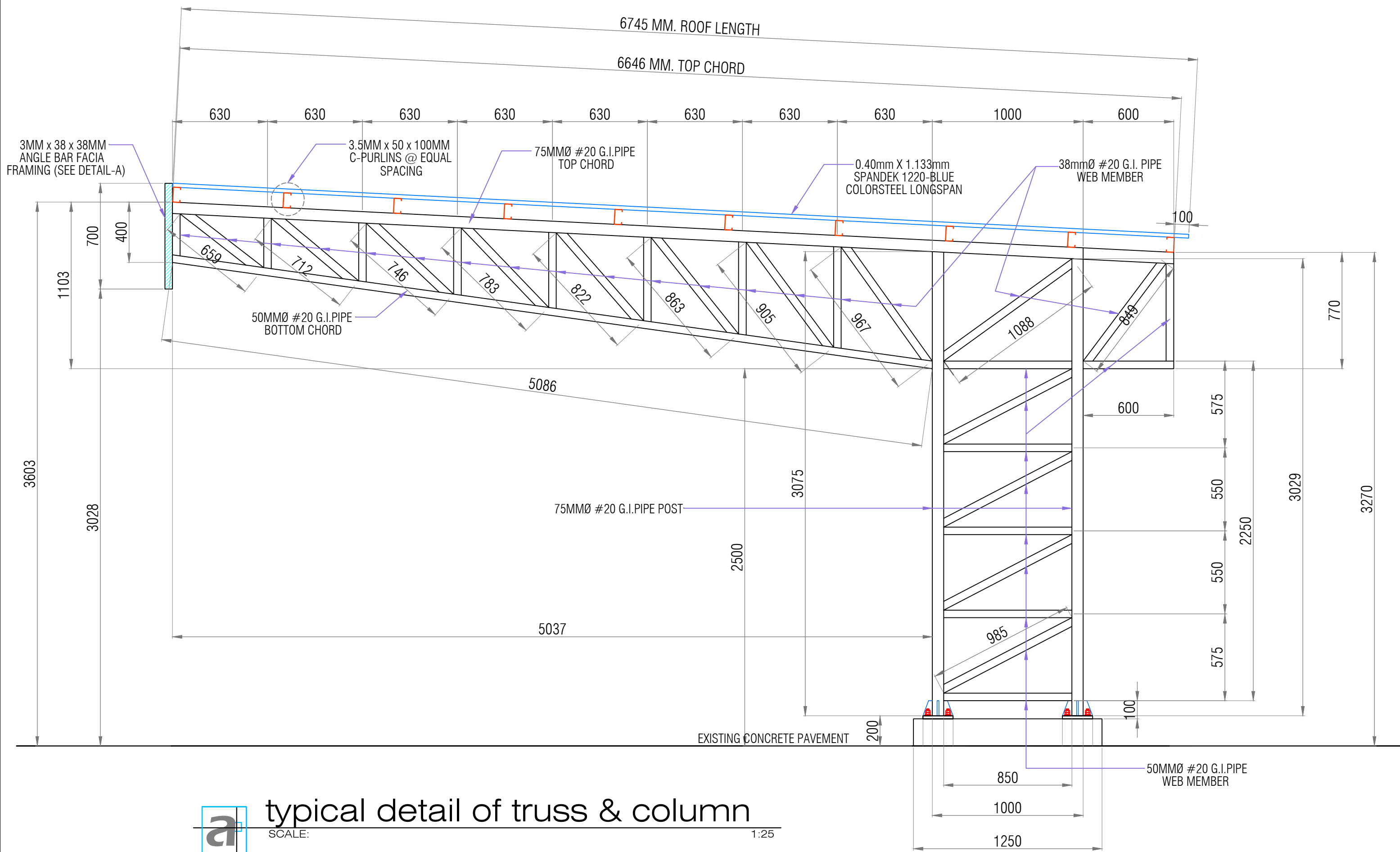
1:600


<div><div>PHILIPPINE PORTS AUTHORITY</div></div> <div>PORT OF CAGAYAN DE ORO MISAMIS ORIENTAL</div>	TITLE:	PROPOSED PARKING SHED AT BUILDING 2					SHEET NO.
	LOCATION:	PORT OF CAGAYAN DE ORO				SHEET CONTENTS	<div>2 10</div>
	PREPARED BY:	CHECKED BY:	SUBMITTED BY:	APPROVED:	● SITE DEVELOPMENT PLAN		
	KAREL T. SUMICAD Construction Foreman A	MARC M. AVELLANA Supervising Engineer A	ANTONIO M. TORCINO, JR. Acting ESD Manager	ISIDRO V. BUTASLAC, JR. Port Manager			

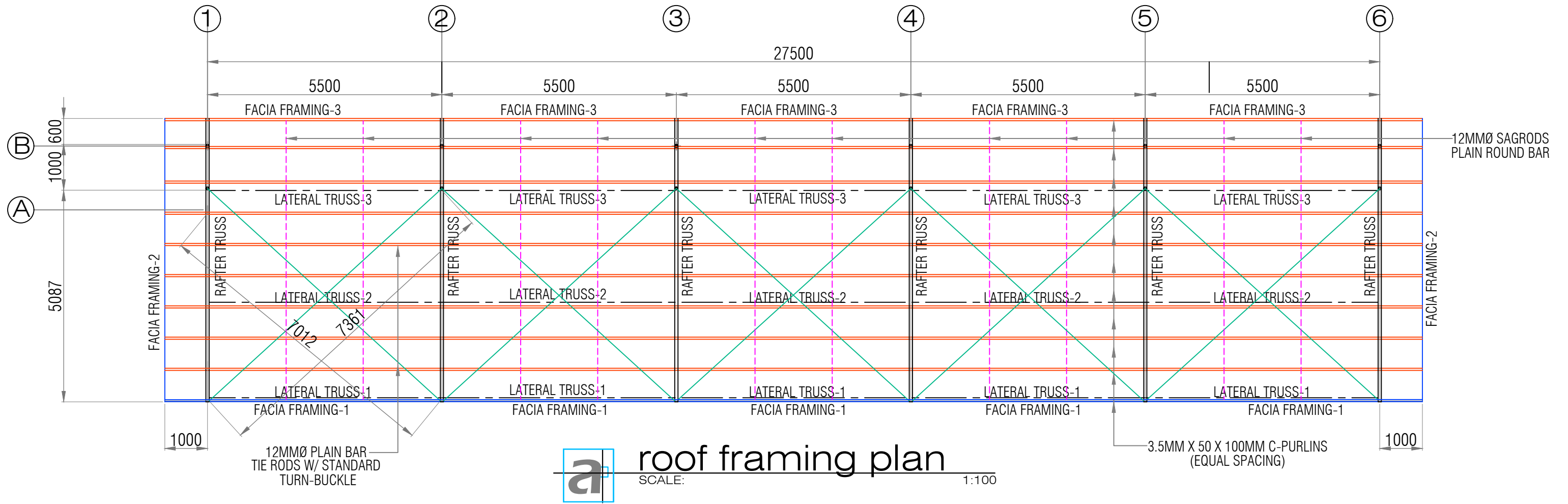
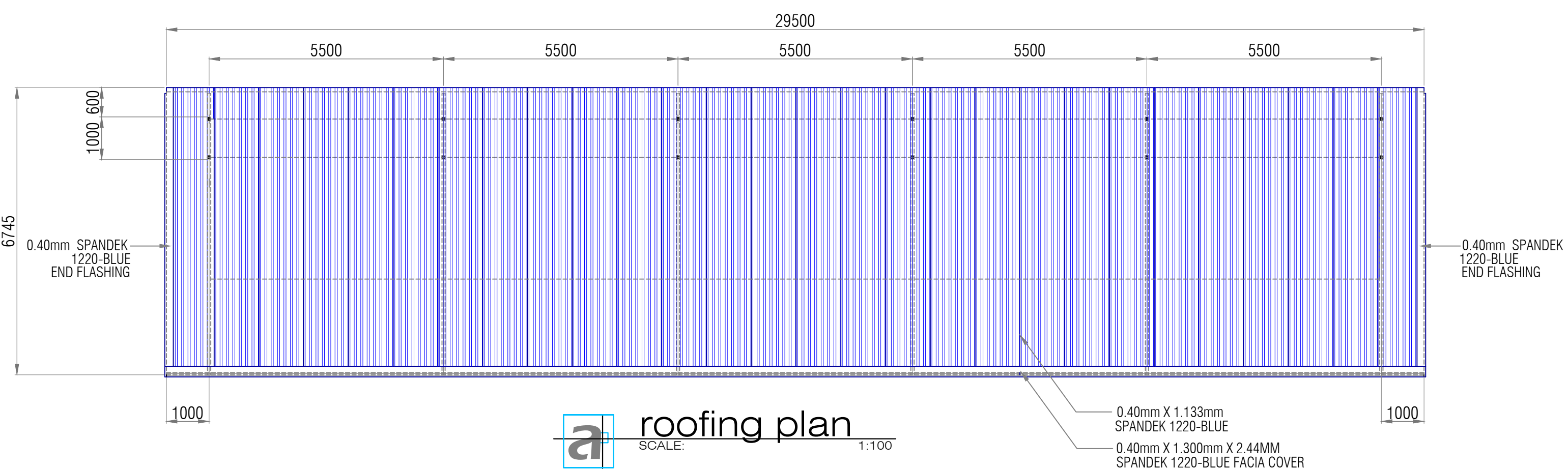



 parking shed plan
SCALE: 1:100

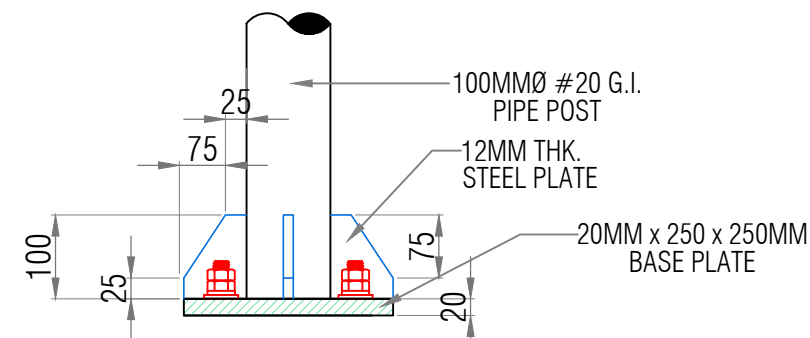
<div><div>PHILIPPINE PORTS AUTHORITY</div></div> <div>PORT OF CAGAYAN DE ORO MISAMIS ORIENTAL</div>	TITLE:	PROPOSED PARKING SHED AT BUILDING 2					SHEET NO.
	LOCATION:	PORT OF CAGAYAN DE ORO				SHEET CONTENTS	<div><div>3</div><div>10</div></div>
	PREPARED BY:	CHECKED BY:	SUBMITTED BY:	APPROVED:	● PARKING SHED PLAN		
	KAREL T. SUMICAD Construction Foreman A	MARC M. AVELLANA Supervising Engineer A	ANTONIO M. TORCINO, JR. Acting ESD Manager	ISIDRO V. BUTASLAC, JR. Port Manager			



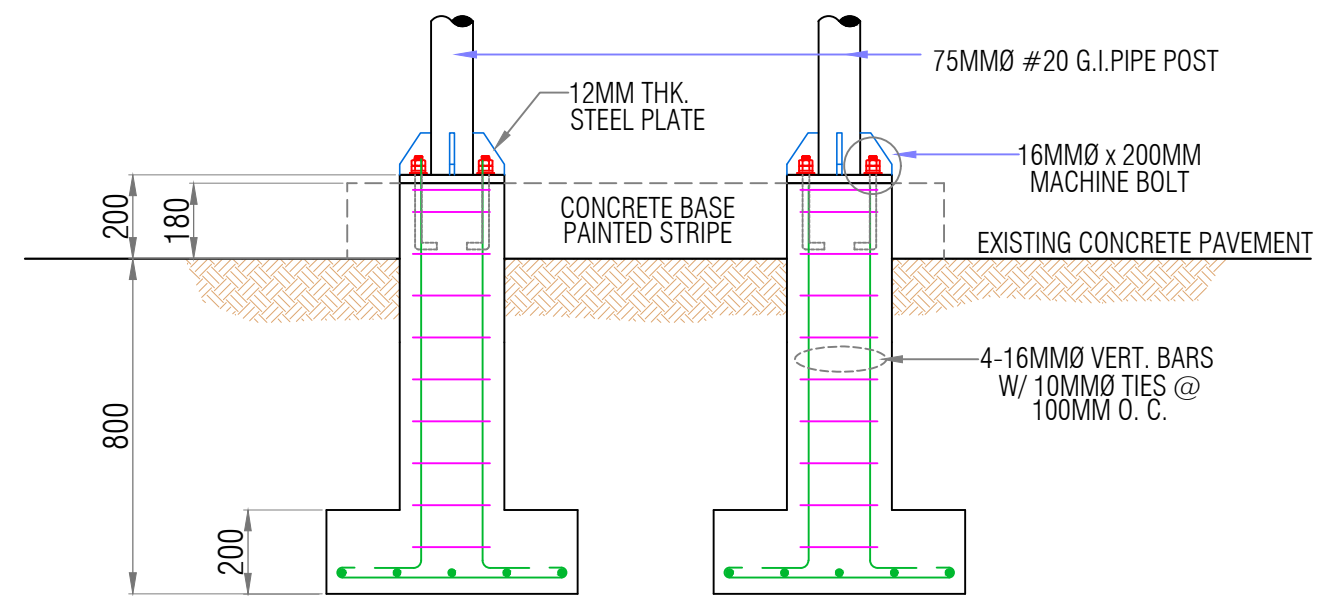
 <p>PORT OF CAGAYAN DE ORO MISAMIS ORIENTAL</p>	TITLE:		PROPOSED PARKING SHED AT BUILDING 2		SHEET NO.	
	LOCATION:		PORT OF CAGAYAN DE ORO		SHEET CONTENTS	
	PREPARED BY:		CHECKED BY:	SUBMITTED BY:	<ul style="list-style-type: none"> TYP. DETAIL OF TRUSS & COLUMN 	
	KAREL T. SUMICAD Construction Foreman A		MARC M. AVELLANA Supervising Engineer A	ANTONIO M. TORCINO, JR. Acting ESD Manager		
		APPROVED:		ISIDRO V. BUTASLAC, JR. Port Manager	<div>4</div> <div>10</div>	



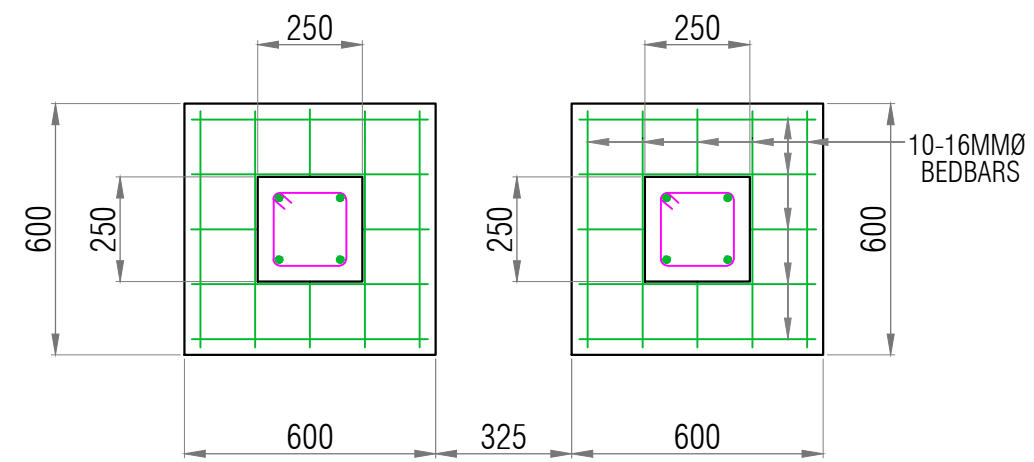
<div><div>PHILIPPINE PORTS AUTHORITY</div></div> <div>PORT OF CAGAYAN DE ORO MISAMIS ORIENTAL</div>	TITLE:	PROPOSED PARKING SHED AT BUILDING 2					SHEET NO.
	LOCATION:	PORT OF CAGAYAN DE ORO				SHEET CONTENTS	<div><div>5</div><div>10</div></div>
	PREPARED BY:	CHECKED BY:	SUBMITTED BY:	APPROVED:	● ROOF FRAMING PLAN & ROOFING PLAN		
	KAREL T. SUMICAD Construction Foreman A	MARC M. AVELLANA Supervising Engineer A	ANTONIO M. TORCINO, JR. Acting ESD Manager	ISIDRO V. BUTASLAC, JR. Port Manager			



typical detail of base plate
SCALE: 1:10

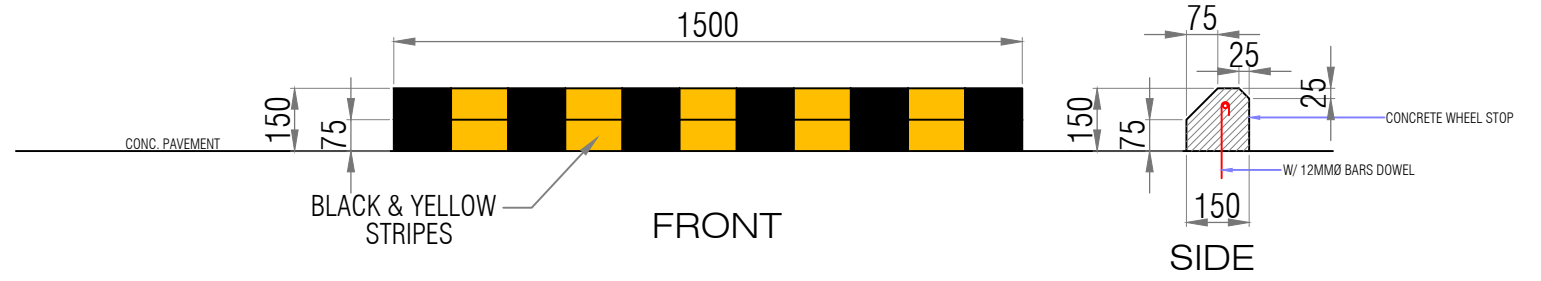


SECTION

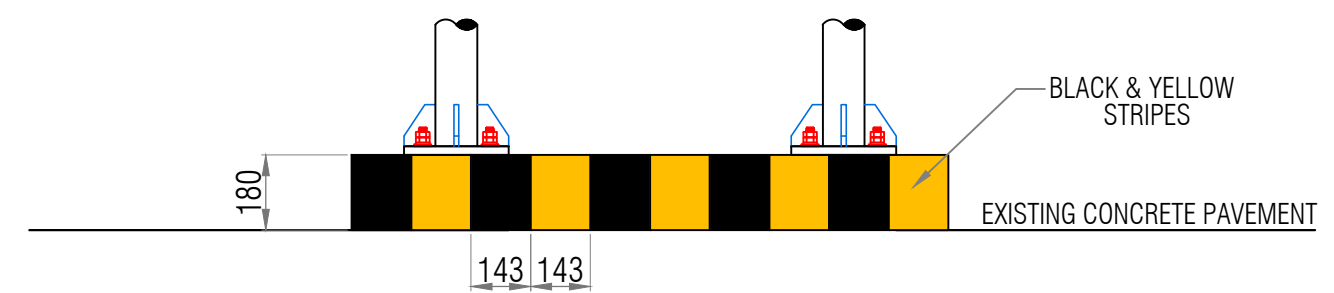


PLAN

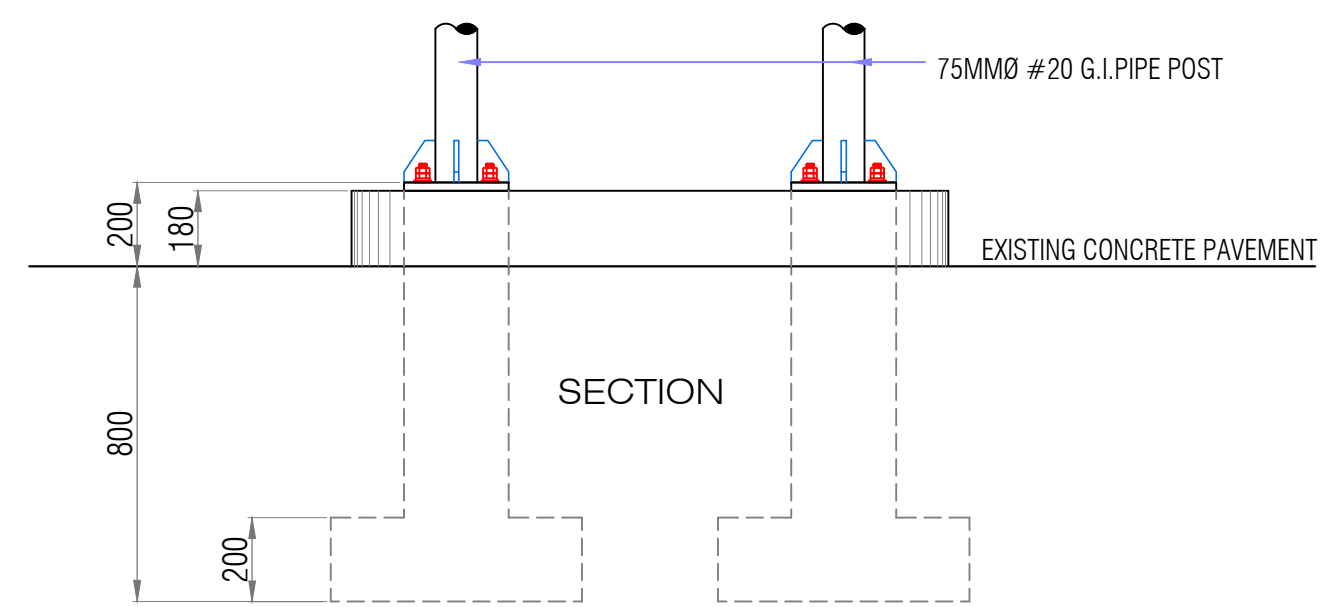
typical detail of pedestal
SCALE: 1:20



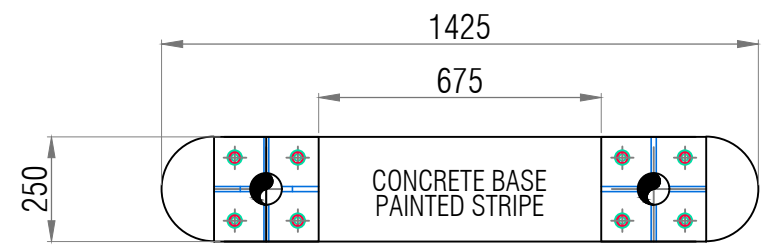
typical detail of wheel stop
SCALE: 1:20



ELEVATION




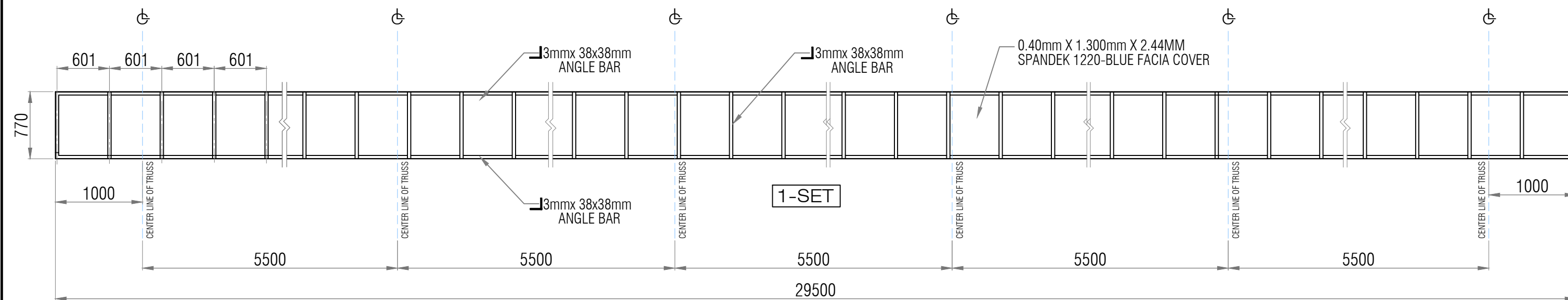
SECTION



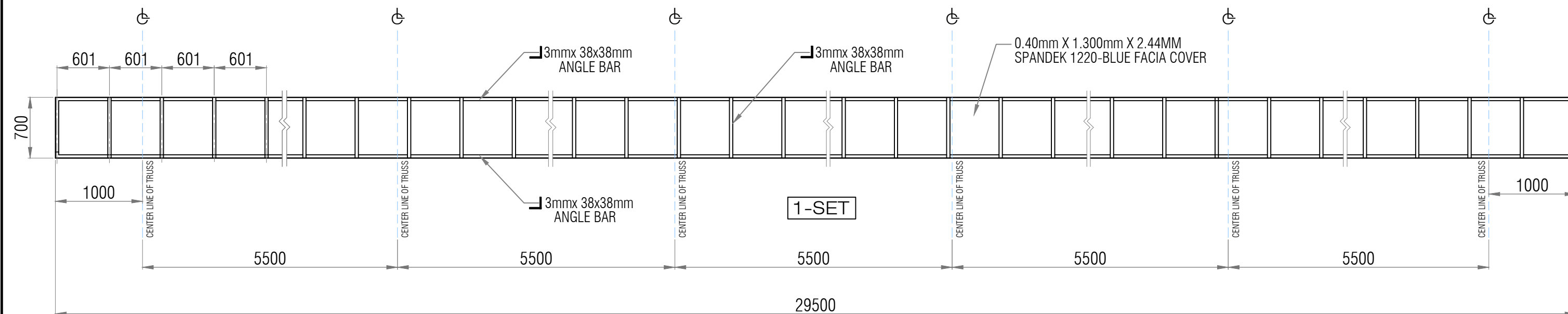
PLAN

typical detail of concrete base
SCALE: 1:20


<div></div> <div>PORT OF CAGAYAN DE ORO MISAMIS ORIENTAL</div>	TITLE:	PROPOSED PARKING SHED AT BUILDING 2					<div>SHEET NO.</div> <div>610</div>
	LOCATION:	PORT OF CAGAYAN DE ORO				SHEET CONTENTS	
	PREPARED BY:	CHECKED BY:	SUBMITTED BY:	APPROVED:	<ul style="list-style-type: none">TYP. DETAIL OF PEDESTALTYP. DETAIL OF CONCRETE BASETYP. DETAIL OF BASE PLATE		
	KAREL T. SUMICAD Construction Foreman A	MARC M. AVELLANA Supervising Engineer A	ANTONIO M. TORCINO, JR. Acting ESD Manager	ISIDRO V. BUTASLAC, JR. Port Manager			

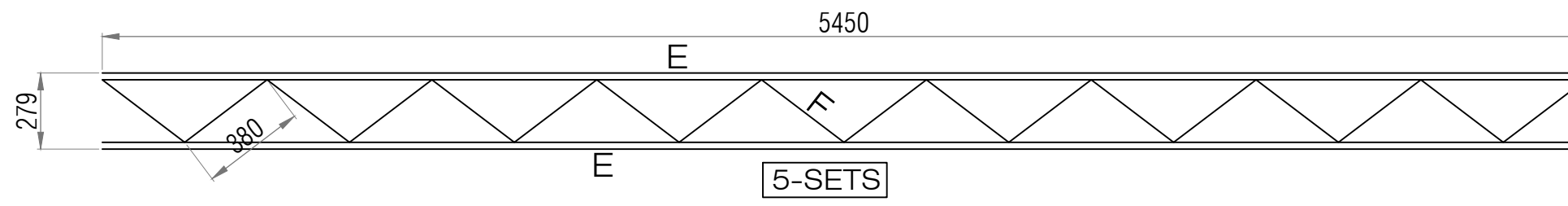
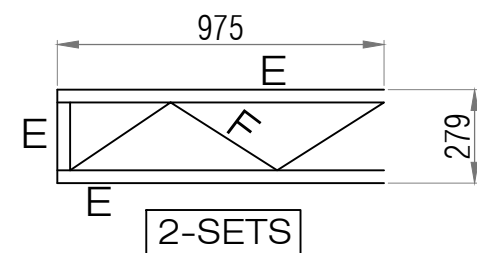
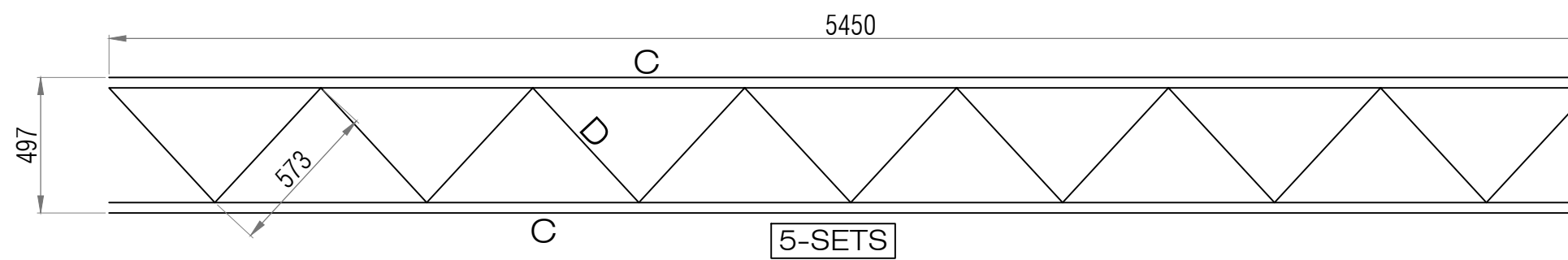
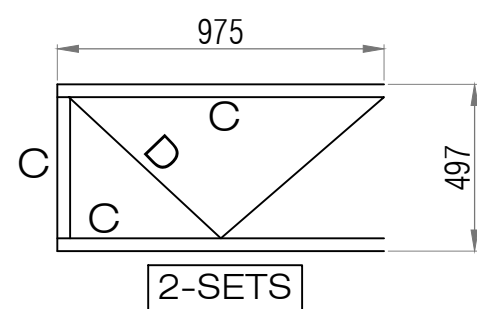
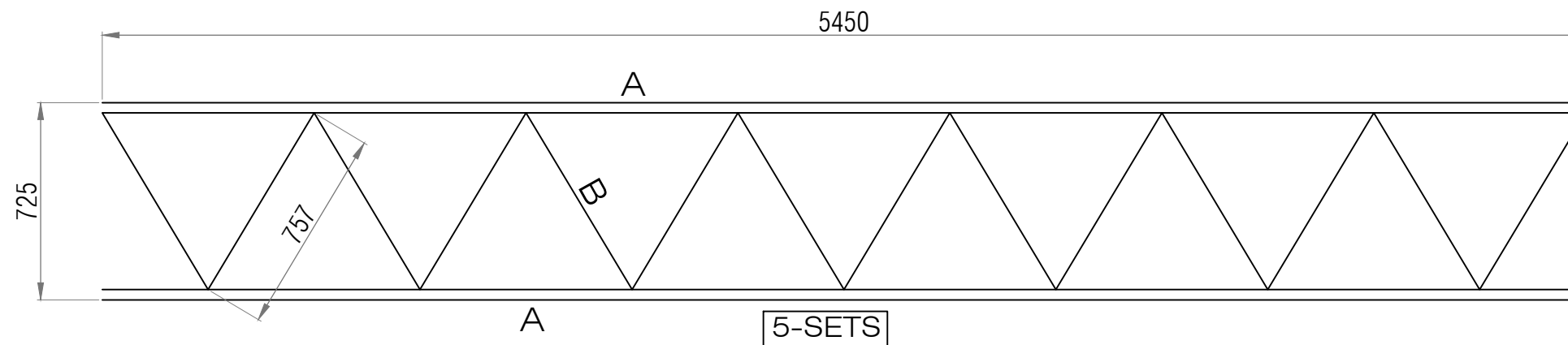
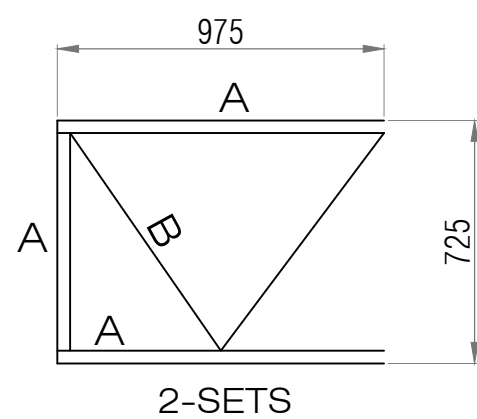


 detail of facia framing-3
SCALE: 1:50



 detail of facia framing-1
SCALE: 1:50

<div></div> <div>PORT OF CAGAYAN DE ORO MISAMIS ORIENTAL</div>	TITLE:	PROPOSED PARKING SHED AT BUILDING 2					SHEET NO.
	LOCATION:	PORT OF CAGAYAN DE ORO				SHEET CONTENTS	<div><div>7</div><div>10</div></div>
	PREPARED BY:	CHECKED BY:	SUBMITTED BY:	APPROVED:	● DETAIL OF FACIA FRAMING		
	KAREL T. SUMICAD Construction Foreman A	MARC M. AVELLANA Supervising Engineer A	ANTONIO M. TORCINO, JR. Acting ESD Manager	ISIDRO V. BUTASLAC, JR. Port Manager			



LEGEND:

- A- 38MMØ # 20 G.I. PIPE
- B- 25MMØ # 20 G.I. PIPE
- C- 38MMØ # 20 G.I. PIPE
- D- 25MMØ # 20 G.I. PIPE
- E- 25MMØ # 20 G.I. PIPE
- F- 12.5MMØ # 20 G.I. PIPE

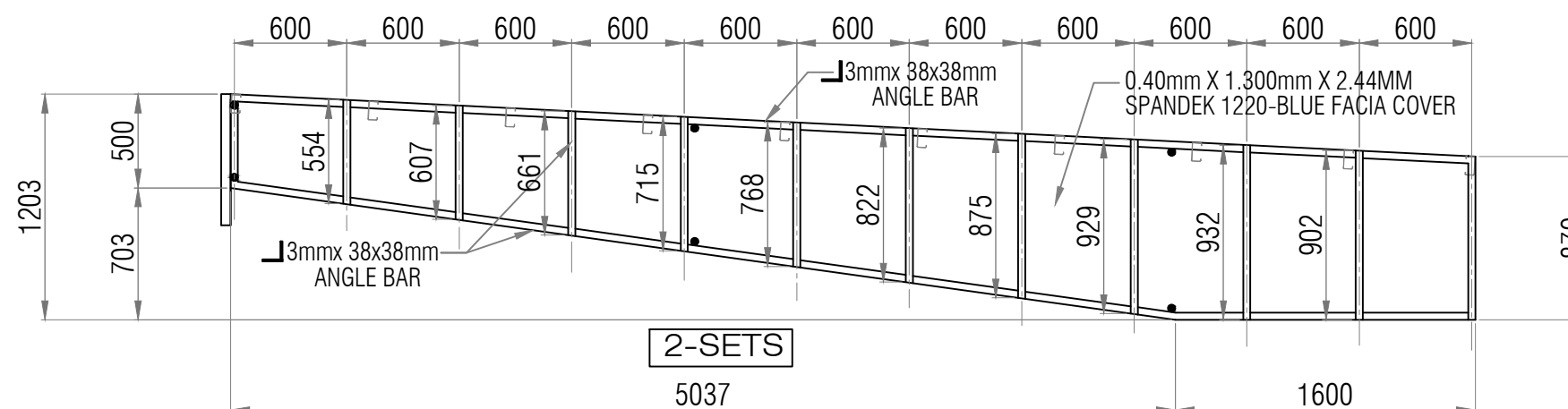
overhang



typical detail of lateral truss

SCALE:

1:25



detail of facia framing-2

SCALE:

1:40



PORT OF
CAGAYAN DE ORO
MISAMIS ORIENTAL

TITLE:

PROPOSED PARKING SHED AT BUILDING 2

LOCATION:

PORT OF CAGAYAN DE ORO

PREPARED BY:

KAREL T. SUMICAD
Construction Foreman A

CHECKED BY:

MARC M. AVELLANA
Supervising Engineer A

SUBMITTED BY:

ANTONIO M. TORCINO, JR.
Acting ESD Manager

APPROVED:

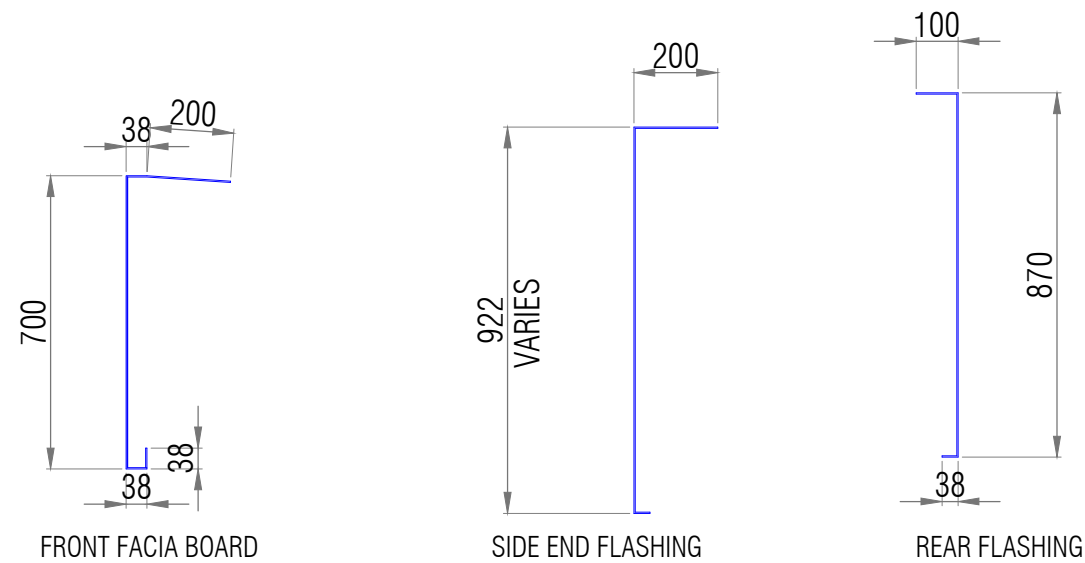
ISIDRO V. BUTASLAC, JR.
Port Manager

SHEET CONTENTS

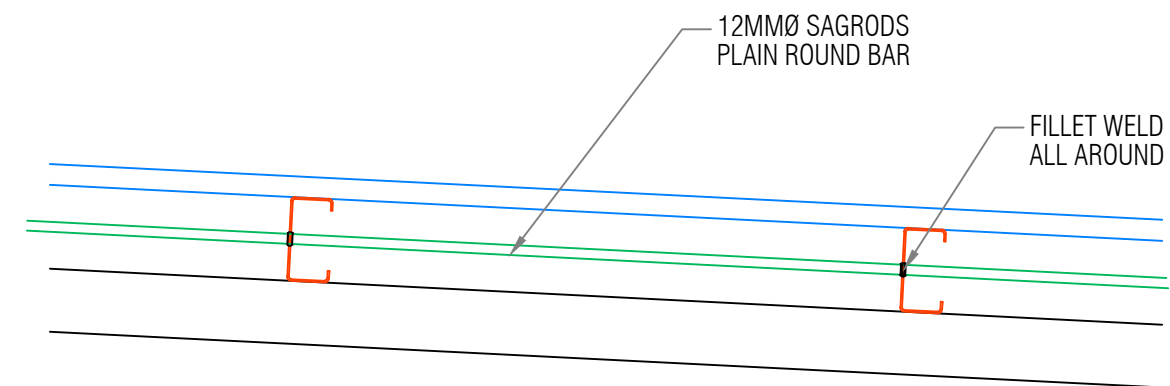
- DETAIL OF FACIA FRAMING
- DETAIL OF LATERAL TRUSS

SHEET NO.

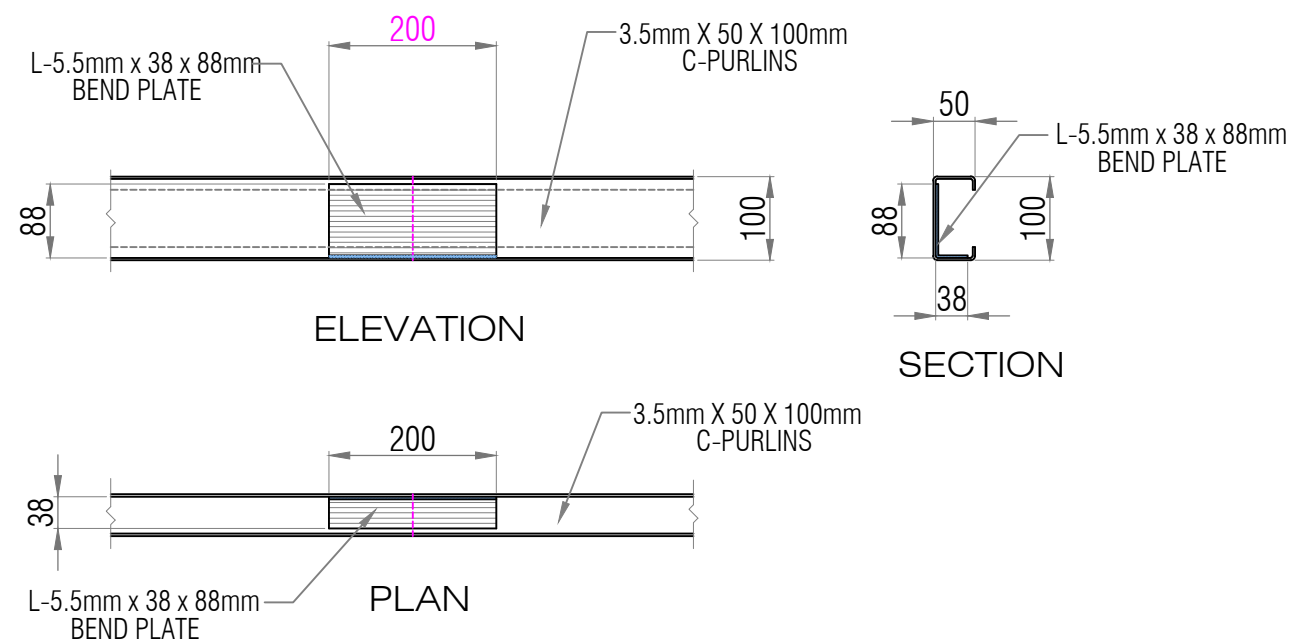
8
10



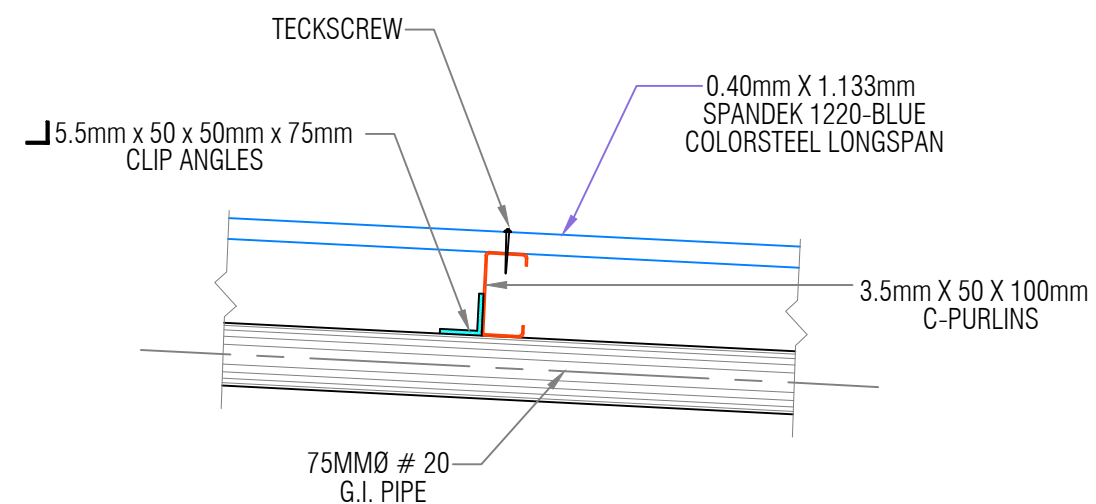
 detail of colorsteel flashing
SCALE: 1:20




 typical detail of sagrod
SCALE: 1:10



 typical joint of purlins
SCALE: 1:10

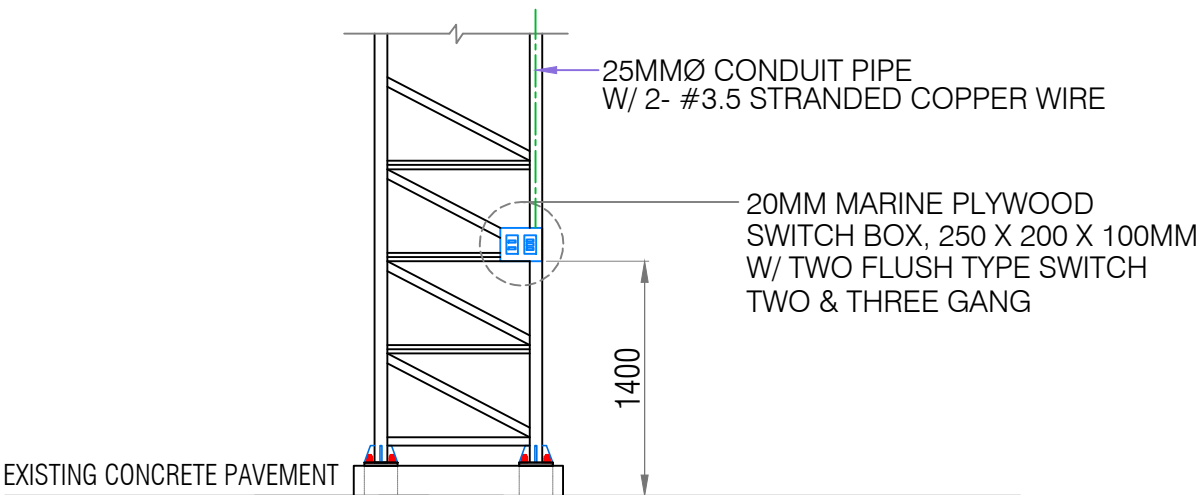
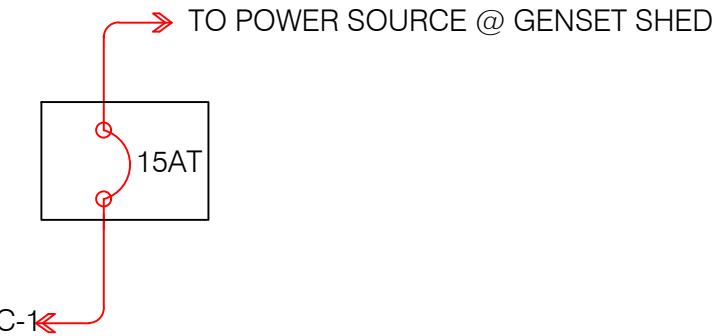
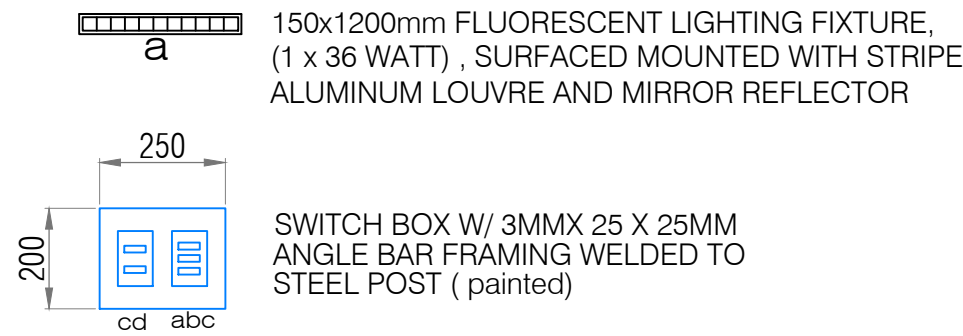


 typical section of purlins
SCALE: 1:10

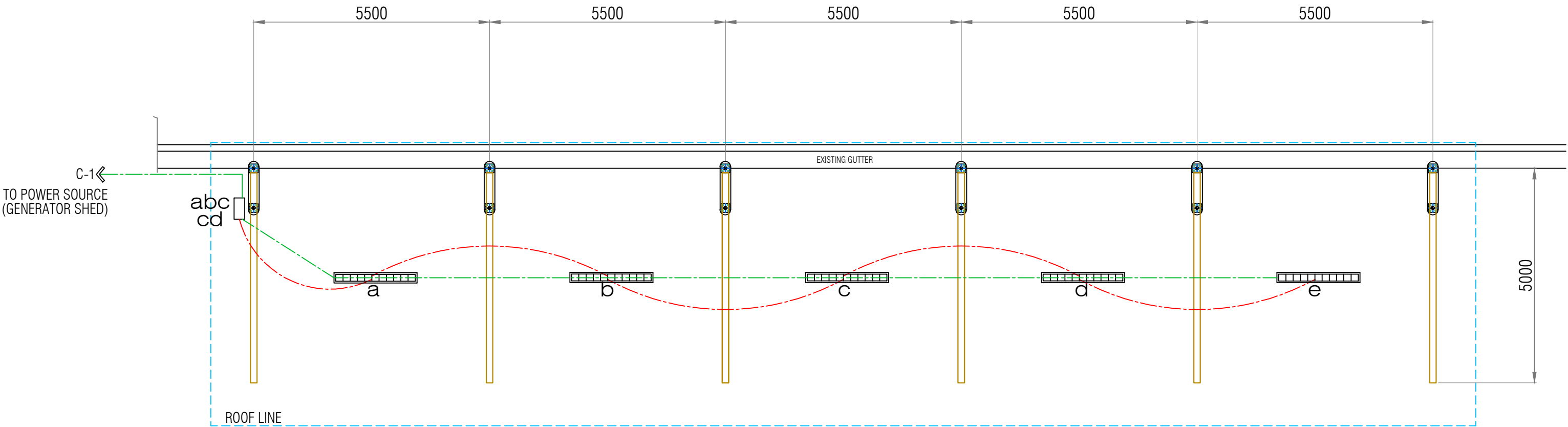
 <p>PORT OF CAGAYAN DE ORO MISAMIS ORIENTAL</p>	TITLE:		PROPOSED PARKING SHED AT BUILDING 2		SHEET NO.	
	LOCATION:		PORT OF CAGAYAN DE ORO		SHEET CONTENTS	
	PREPARED BY:		CHECKED BY:	SUBMITTED BY:	APPROVED:	<div>9</div> <div>10</div>
	KAREL T. SUMICAD Construction Foreman A		MARC M. AVELLANA Supervising Engineer A	ANTONIO M. TORCINO, JR. Acting ESD Manager	ISIDRO V. BUTASLAC, JR. Port Manager	

- TYPICAL JOINT OF PURLINS
- TYPICAL SECTION OF PURLINS
- TYPICAL DETAIL OF SAGROD

LEGEND:



 detail of switch connection
SCALE: 1:50



 electrical plan
SCALE: 1:100



PORT OF
CAGAYAN DE ORO
MISAMIS ORIENTAL

TITLE:		PROPOSED PARKING SHED AT BUILDING 2		
LOCATION:		PORT OF CAGAYAN DE ORO		
PREPARED BY:		CHECKED BY:	SUBMITTED BY:	APPROVED:
KAREL T. SUMICAD Construction Foreman A		MARC M. AVELLANA Supervising Engineer A	ANTONIO M. TORCINO, JR. Acting ESD Manager	ISIDRO V. BUTASLAC, JR. Port Manager

SHEET CONTENTS

- ELECTRICAL PLAN

SHEET NO.

10
10